

# JVS

PRONÁJEM JEŘÁBŮ

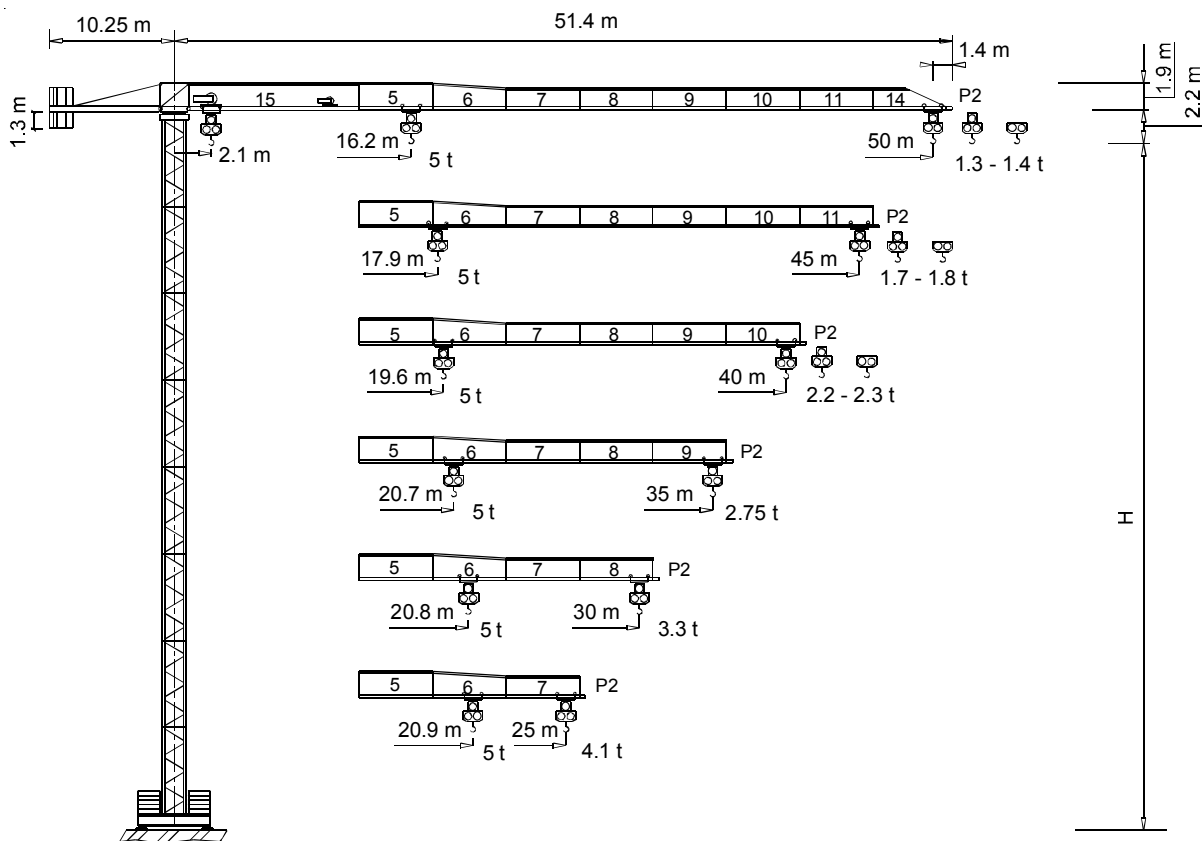


# TEREX | COMEDIL

## Gru a torre "Flat Top"

"Flat Top" Tower Crane • Grue à tour "Flat Top"

"Flat Top" Turmdrehkran • Grúa torre "Flat Top"



CE FEM 1.001 A3

THE **ULTIMATE** CRANE™

Dati illustrativi non impegnativi  
Con riserva di modifica senza preavviso

Specifications and data not binding  
Subject to modification without notice

Données techniques seulement indicatives  
Modifications réservées sans préavis

Angaben und Beschreibung unverbindlich  
Änderungen vorbehalten ohne weitere Mitteilung

Dibujos y datos sin compromiso  
Modificaciones reservadas sin preaviso

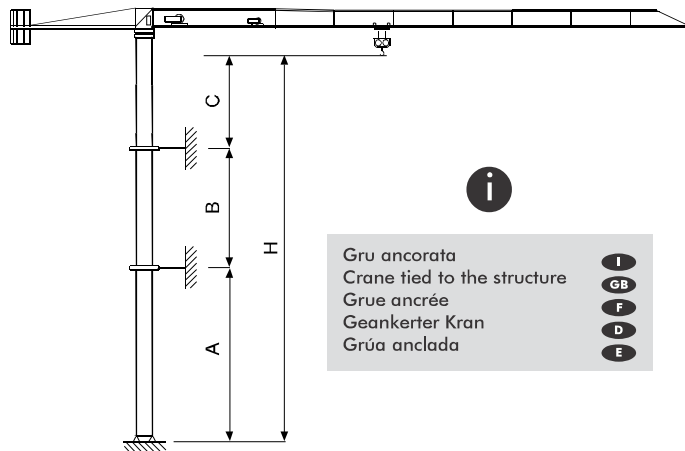
UTE.DOC. REV.002

# "CITY" CTT 91-5 TS12

Diagramma di portata **I** / Load Diagram **GB**      Courbes de charges **I** / Lastkurven **D**      Curvas de cargas **I**

		CTT 91-5										
		5	10	15	20	25	30	35	40	45	50	
2.5 t	- 30.63 m	2.5	2.5	2.5	2.5	2.5	2.5	2.14	1.83	1.59	1.4	
2.5 t	- 29.53 m	2.5	2.5	2.5	2.5	2.5	2.45	2.04	1.73	1.49	1.3	
5 t	- 16.16 m	5	5	5	3.93	3.04	2.45	2.04	1.73	1.49	1.3	
2.5 t	- 33.93 m	2.5	2.5	2.5	2.5	2.5	2.5	2.41	2.07	1.8		
2.5 t	- 32.74 m	2.5	2.5	2.5	2.5	2.5	2.5	2.31	1.97	1.7		
5 t	- 17.88 m	5	5	5	4.41	3.42	2.77	2.31	1.97	1.7		
2.5 t	- 37.19 m	2.5	2.5	2.5	2.5	2.5	2.5	2.5	2.3			
2.5 t	- 35.92 m	2.5	2.5	2.5	2.5	2.5	2.5	2.5	2.2			
5 t	- 19.58 m	5	5	5	4.88	3.8	3.08	2.58	2.2			
2.5 t	- 35 m	2.5	2.5	2.5	2.5	2.5	2.5	2.5				
5 t	- 20.68 m	5	5	5	5	4.04	3.29	2.75				
2.5 t	- 30 m	2.5	2.5	2.5	2.5	2.5	2.5					
5 t	- 20.76 m	5	5	5	5	4.06	3.3					
2.5 t	- 25 m	2.5	2.5	2.5	2.5	2.5						
5 t	- 20.94 m	5	5	5	5	4.1						

Altre installazioni **I** / Other configurations **GB**      Autres implantations **I** / Aufstellmöglichkeiten **D**      Otras implantaciones **I**



Torre

Tower

Tour

Turm

Torre

Le prolunghe TS sono disponibili in lunghezze 11.8 m, 5.9 m, 2.95 m.

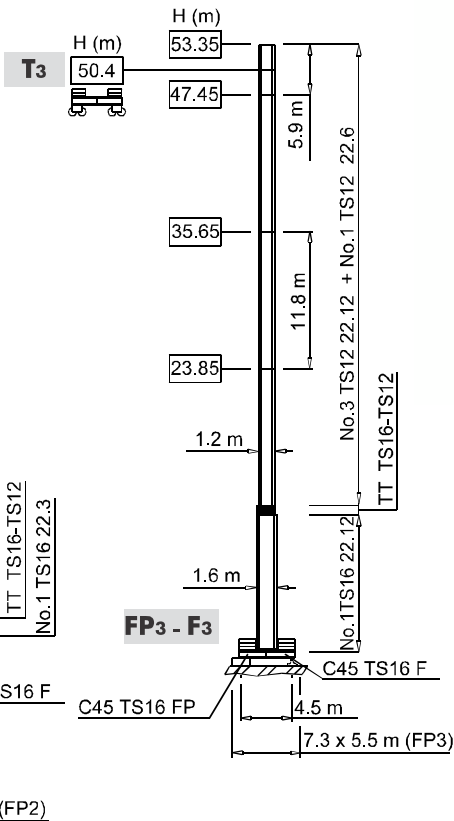
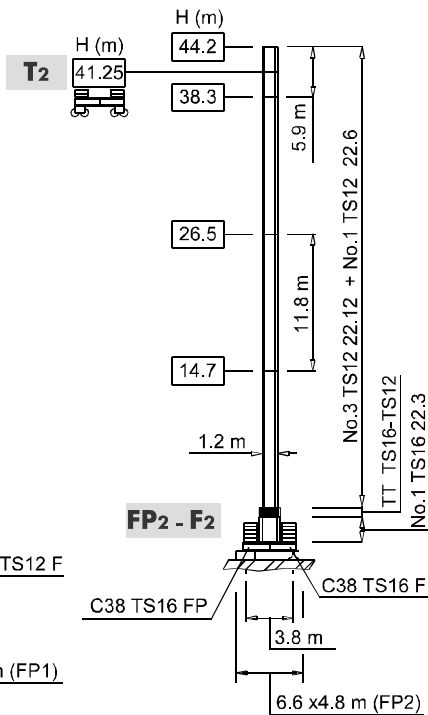
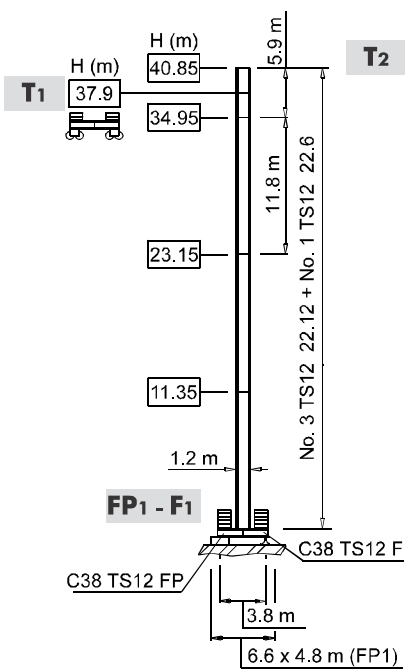
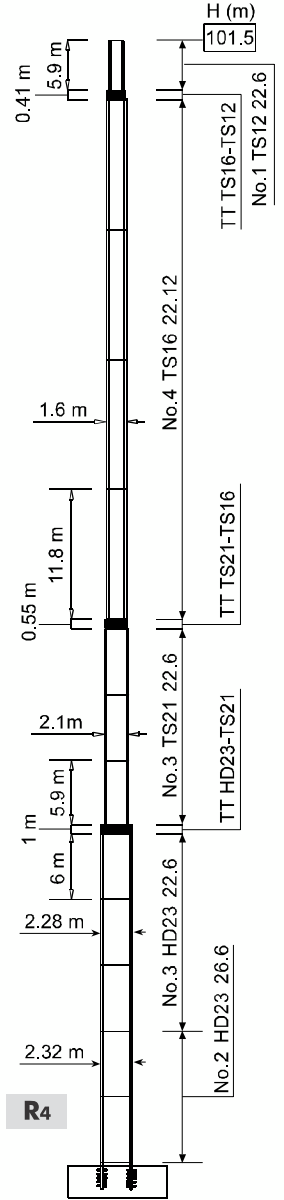
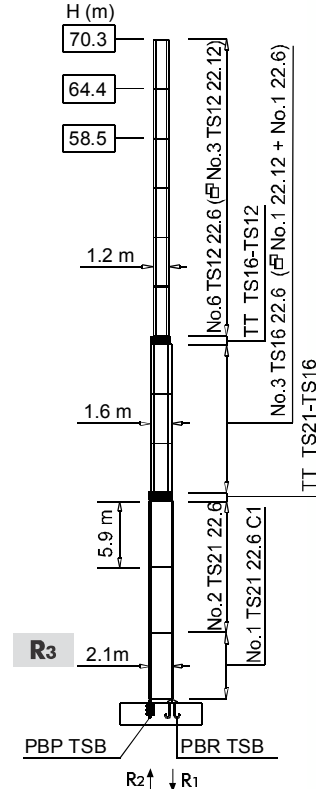
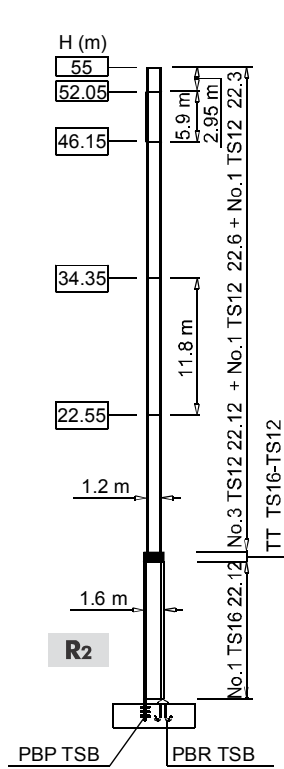
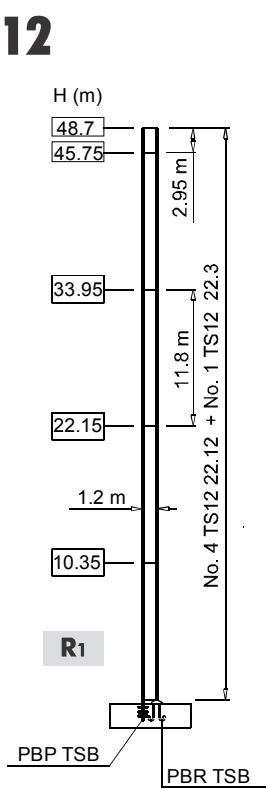
Les éléments de mât TS sont disponibles en longueur 11.8 m, 5.9 m, 2.95 m.

Los tramos de torre TS son disponibles en las medidas de largo 11.8 m, 5.9 m, 2.95 m.

The available lengths for the TS tower sections are 11.8 m, 5.9 m, 2.95 m.

Die Turmschüsse TS sind mit Längen 11.8 m, 5.9 m, 2.95 m verfügbar.

**TS12**



H

Altezza massima sotto gancho

Max. under hook height

GB

Hauteur maxi. sous crochet

I

Höchste Hackenhöhe

D

Maxima altura bajo gancho

E

<b>Meccanismi</b> <b>Mechanisms</b>		<b>Mécanismes</b> <b>Antriebe</b>		<b>Mecanismos</b>	
--	--	--------------------------------------	--	-------------------	--

11 APC 25	31 * kVA	400 V - 50 Hz	2000/14/CE
18 AFC 25	41 * kVA	400 V - 50 Hz / 460 V - 60 Hz	

\* Gru senza traslazione / Crane without travelling equipment / Grue sans translation / Krane ohne Schienenfahren / Grúa sin traslación

		n/m <sup>2</sup>	ii	kW	
<b>11 APC 25</b>		6	2.5	11	186 m
		20	2.5		
		40	1.25		
		3	5		
		10	5		
		20	2.5		
<b>18 AFC 25 (VARIANT)</b>		0 ⇨ 2.2	2.5	18	310 m
		2.2 ⇨ 8	2.5		
		8 ⇨ 34	2.5		
		34 ⇨ 55	1.46		
		55 ⇨ 69	1.1		
		0 ⇨ 1.1	5		
		1.1 ⇨ 4	5		
		4 ⇨ 17	5		
		17 ⇨ 27.5	2.92		
		27.5 ⇨ 34.5	2.2		

<b>DAD 2 2 D1</b>	0 - 22 - 44 m/min	2.2 - 1.5 kW
<b>DVF 3 4 D4 (VARIANT)</b>	0 ⇨ 6 ⇨ 30 ⇨ 60 m/min	4 kW
<b>SSR 1 1 65</b>	0.76 r.p.m.	1 × 65 Nm
<b>▲ TAD 1RP 2M3</b>	0 - 24 m/min	2 × 3 kW
<b>● TAD 2RP 2M3</b>		

	▲	●
	Max. H [m]	
T <sub>1</sub>	37.9	-
T <sub>2</sub>	41.25	-
T <sub>3</sub>	-	50.4

	Sollevamento		Hoisting		Levage		Heben		Elevación
	Traslazione carrello		Trolleying		Distribution		Katzfahren		Distribución
	Rotazione		Slewing		Orientation		Schwenken		Orientación
	Traslazione		Travelling		Translation		Schienenfahren		Traslación
	Direttiva sul livello acustico		Directive on noise level		Directive sur le niveau acoustique		Richtlinien für den Schall-Leistungspegel		Directiva sobre el nivel acustico
	Consultateci		Consult us		Nous consulter		Auf Anfrage		Consultarnos
	Potenza totale richiesta		Power requirements		Puissance totale nécessaire		Geforderte Stromstärke		Potencia necesaria
	Alimentazione		Power supply		Alimentation		Stromversorgung		Alimentación

**Sídlo společnosti**

**Závod 01 - Otrokovice**  
Jeřábový a výtahový servis, s.r.o.  
Napajedelská 1779  
76502 Otrokovice  
tel.: +420 602 116 728  
Fax.: +420 577 922 212  
e-mail: [petr.vacek@jvsjeraby.cz](mailto:petr.vacek@jvsjeraby.cz)

**Závod 02 - Praha**  
Jeřábový a výtahový servis, s.r.o.  
Kutnohorská 425  
109 00 Praha – Měcholupy  
tel.: +420 603 470 380  
e-mail: [tomas.vacek@jvsjeraby.cz](mailto:tomas.vacek@jvsjeraby.cz)

**Závod 03 - Bratislava**  
JVS Slovensko, s.r.o.  
Sasinkova 6  
811 08 Bratislava  
tel. +421 911 116 728  
e-mail: [slovensko@jvszeriavy.sk](mailto:slovensko@jvszeriavy.sk)

IČO: 46344616  
DIČ: CZ46344616  
vedená u KOS v Brně  
spis. zn. C 5461  
[www.jvsjeraby.cz](http://www.jvsjeraby.cz)  
Bankovní spojení:  
ČSOB: 1455621/0300